

KOAMTAC 

KBD401 USB Bluetooth® Dongle User Manual

Rev 1.0

December 2013

Table of Contents

- 1. Knowing your USB Bluetooth dongle5
 - 1.1 Package contents5
 - 1.2 System requirements5
 - 1.3 KBD401 Specifications Summary6
- 2. Driver Installation7
- 3. Pairing with KDC as a Bluetooth device.....9
- 4. Find Bluetooth Serial Comport #11
- 5. Using KDC with Bluesoleil through KBD401G.....13
 - 5.1 Installing BlueSoleil13
 - 5.2 Uninstalling BlueSoleil15
 - 5.3 Getting Started15
- 6. Warranty22
- 7. Contact Information23

Regulatory Compliance



FCC ID : VH9KBD401

This equipment complies with FCC radiation exposure limits set forth for an uncontrolled environment. This equipment should be installed and operated with minimum 20cm between the radiator and your body. This transmitter must not be collocated or operating in conjunction with any other antenna or transmitter unless authorized to do so by the FCC.

Modification not expressly approved by the manufacture could void the user's authority to operate the equipment under FCC rules.



Certificate No. : R-13112001

Products intended for sale within the European Union are marked with a CE Mark which indicates compliance to applicable Directives and European Normes (EN), as follows. Amendments to these Directives or ENs are included: Normes (EN), as follows:

Applicable Directives:

- Radio and Telecommunications Terminal Equipment Directive 1999/5/EC

Scope of Opinion (Essential Requirements)	Applied Specifications / Standards	TCF Identification	Results
Article 3.1(a) - Health	EN 62311:2008	Statement	Complies
Article 3.1(a) - Safety	EN 60950-1:2006+A11:2009	ESTCS1101-002	Complies
Article 3.1(a) - EMC	EN 55022:2006+A1:2007 EN 55024:1998+A1:2001+A2:2003 ETSI EN 301 489-1 V1.8.1 (2008-04) ETSI EN 301 489-17 V2.1.1 (2009-05)	ESTCE0712-007(1)	Complies
Article 3.2 - Radio Spectrum Use	ETSI EN 300 328:V1.7.1 (2006-10)	ESTR0801-018(1)	Complies



R208-
130070

Article 2-1-19, 2.4GHz Wide Band low power data communication system



MSIP-CRM-AI3-KBD401

Warnings and Notes



General warnings:

If the equipment is used in a manner not specified in the equipment's manual, the protection provided by the equipment could be impaired!

Do not use the Bluetooth Dongle if any damage is present!

Repair of the Bluetooth Dongle is only allowed to be carried out by authorized personnel!

Notes:

Metal objects should be kept at least 5 cm away from the dongle in order for the antenna to work efficiently.

Good signal strength should be ensured for reliable communication between Bluetooth devices. Avoid obstacles and keep the device within the Bluetooth module range.

1. Knowing your USB Bluetooth dongle

1.1 Package contents

- KoamTac KBD401
- Installation CD (G version only)



KBD401 USB Bluetooth Dongle

1.2 System requirements

Before using your KBD401 USB Bluetooth dongle, ensure that your system meets the following requirements:

Operating system: Microsoft Windows 7 / 8

System memory: 512MB or larger

Hard drive free space: 10MB for device driver, 500MB for Bluesoleil Bluetooth software (G version only).

1.3 KBD401 Specifications Summary

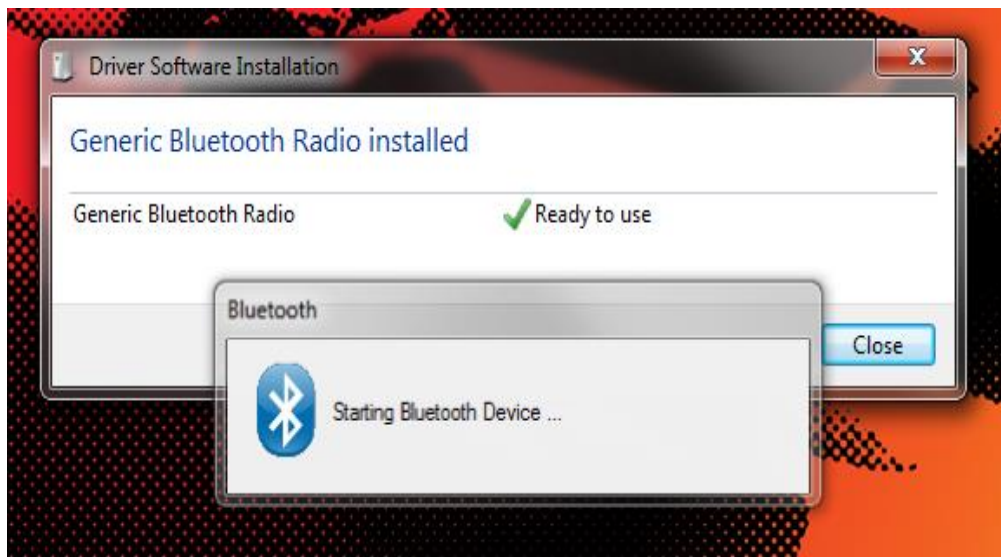
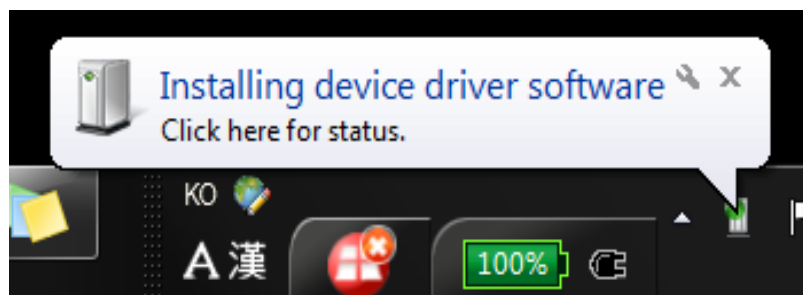
Chipset	CSR8510
Bluetooth Standards	Bluetooth 4.0 Class I
Interface	USB 2.0/1.1
Antenna	Internal Chip Antenna
Range	30 meters
Bluetooth Profile	SPP, HID, (Optional PAN, FTP, SYNCH, OPP, BPP, FAX, BIP, A2DP, HSP, PBA and MAP Via Bluesoleil)
Radio Frequency	2.4 GHz - 2.4835 GHz
Transfer Rate	Up to 3.0Mbps
OS support	Windows 7/8
Power Consumption	5V, 90mA max
Input Power	5V (USB bus-powered)
Physical Dimensions	22mmx15mmx5.35mm (LxWxH)
Weight	2.0g

 Specifications are subject to change without notice.

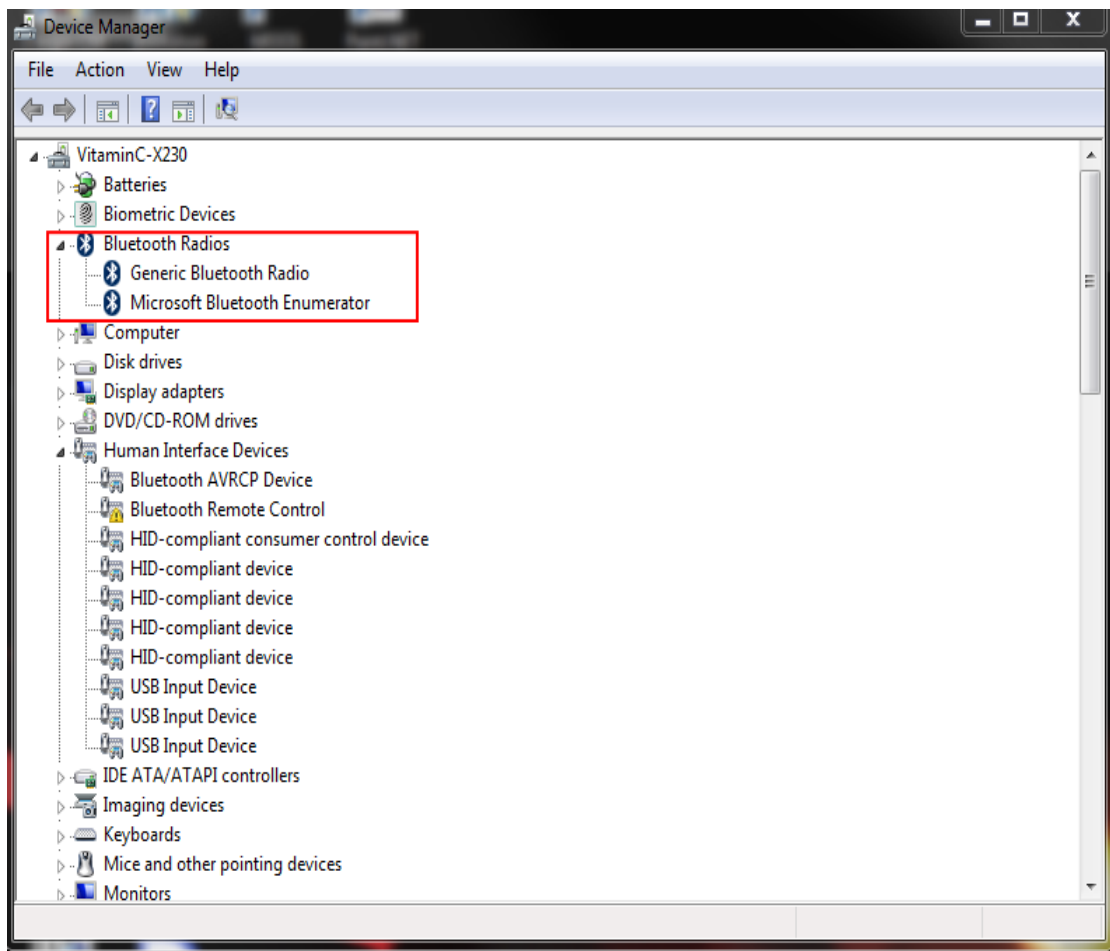
2. Driver Installation

To install the Bluetooth driver to your computer.

1. Insert USB BT Dongle into your computer's USB port.
2. Windows will install "Generic Bluetooth Radio" driver automatically.
3. Computer will display below message.

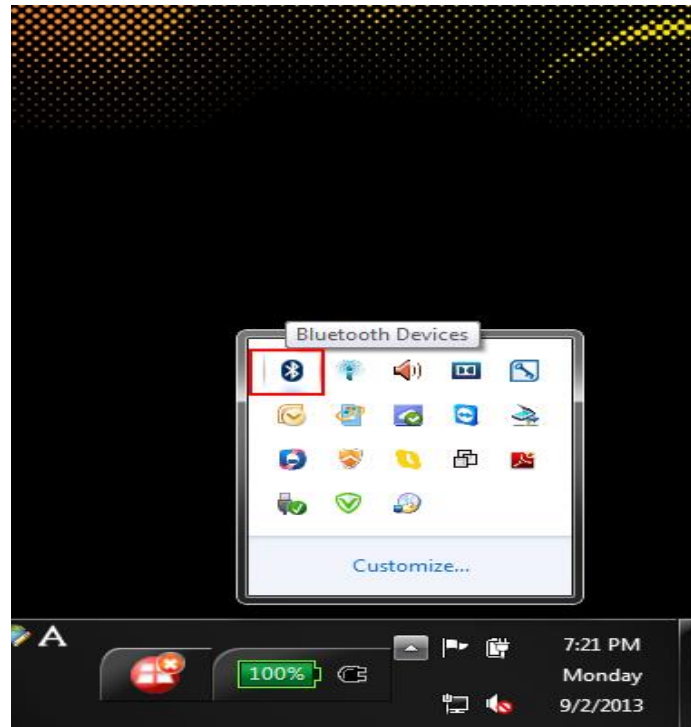


4. If driver is installed successfully, you can find the device in Device Manager.
(Click Start > Control Panel > Hardware and Sound > Device Manager)

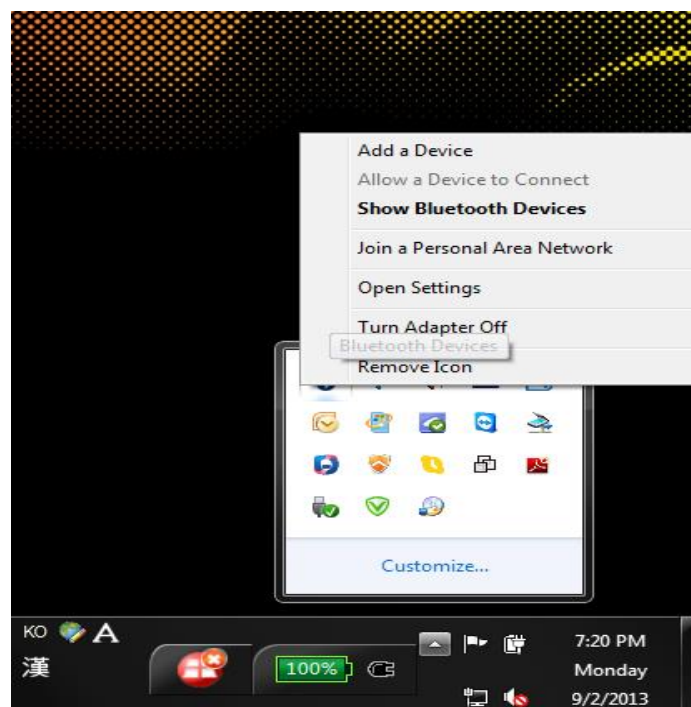


3. Pairing with KDC as a Bluetooth device

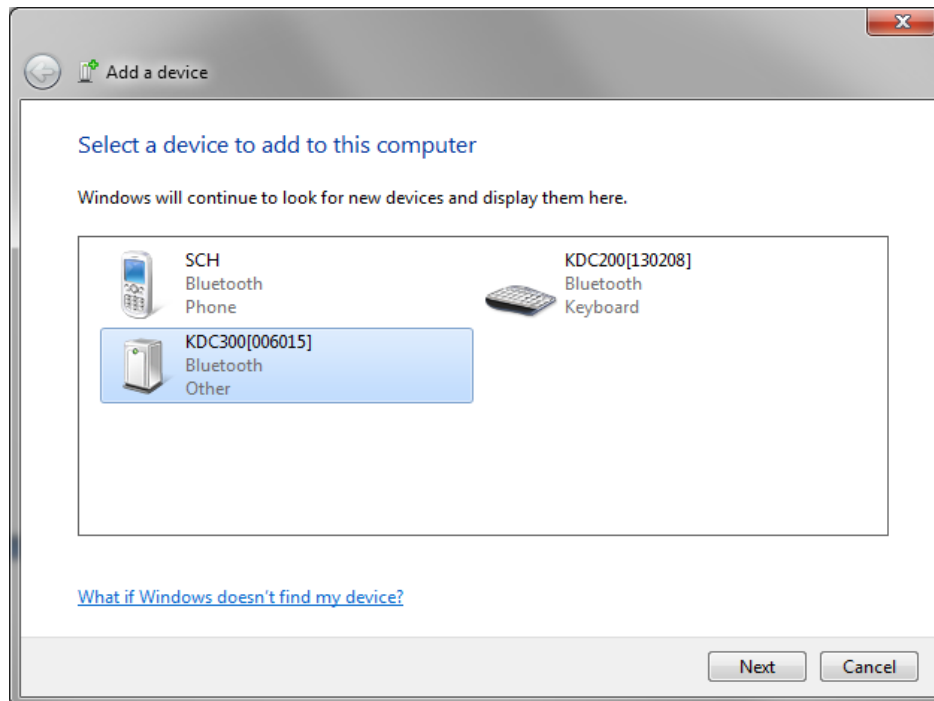
1. Click Bluetooth icon on tray.



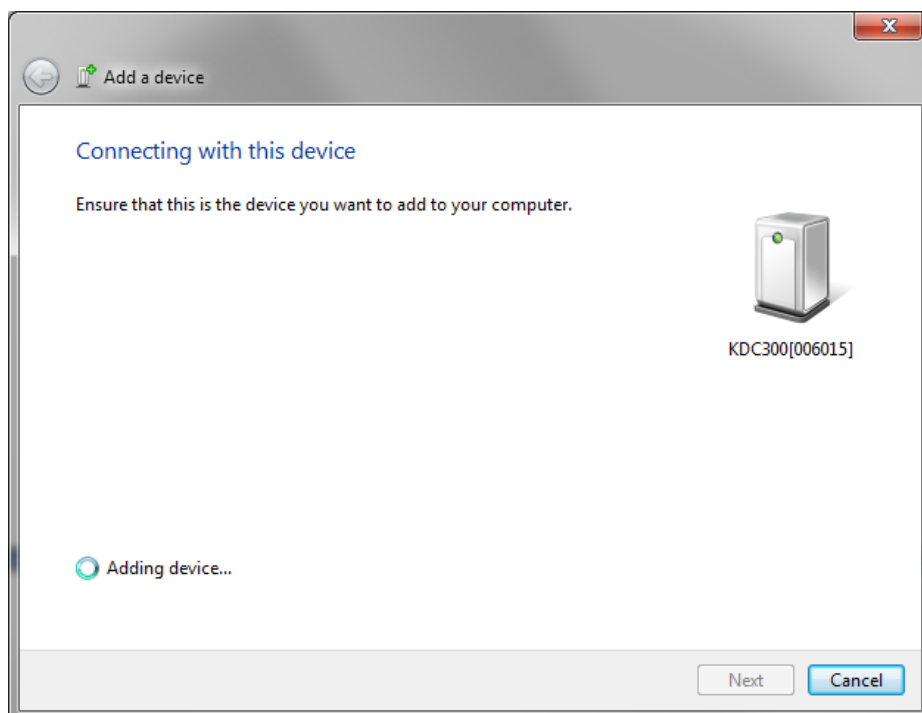
2. Click "Add a Device".



3. Select the Bluetooth device that you want to connect on the list.



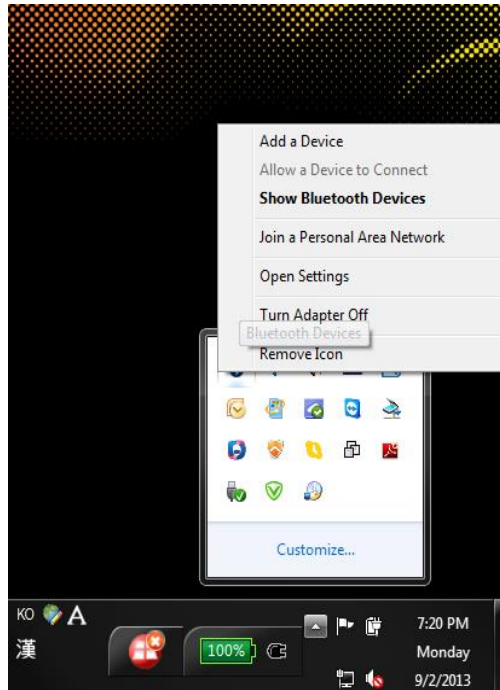
4. Select "Next".



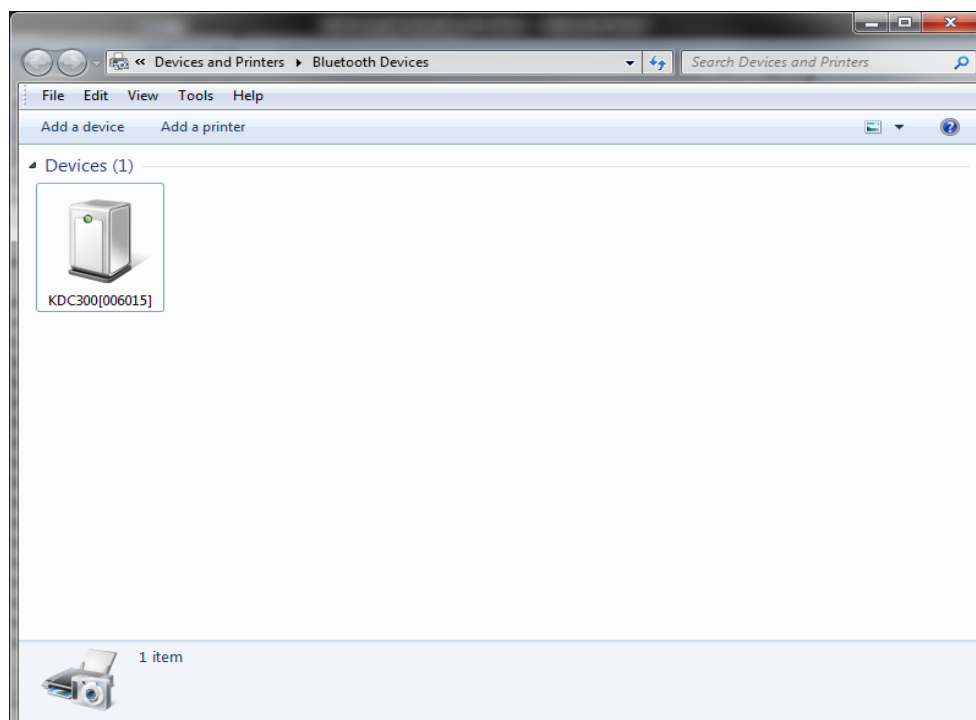
5. Finish Add a Device.

4. Find Bluetooth Serial Comport

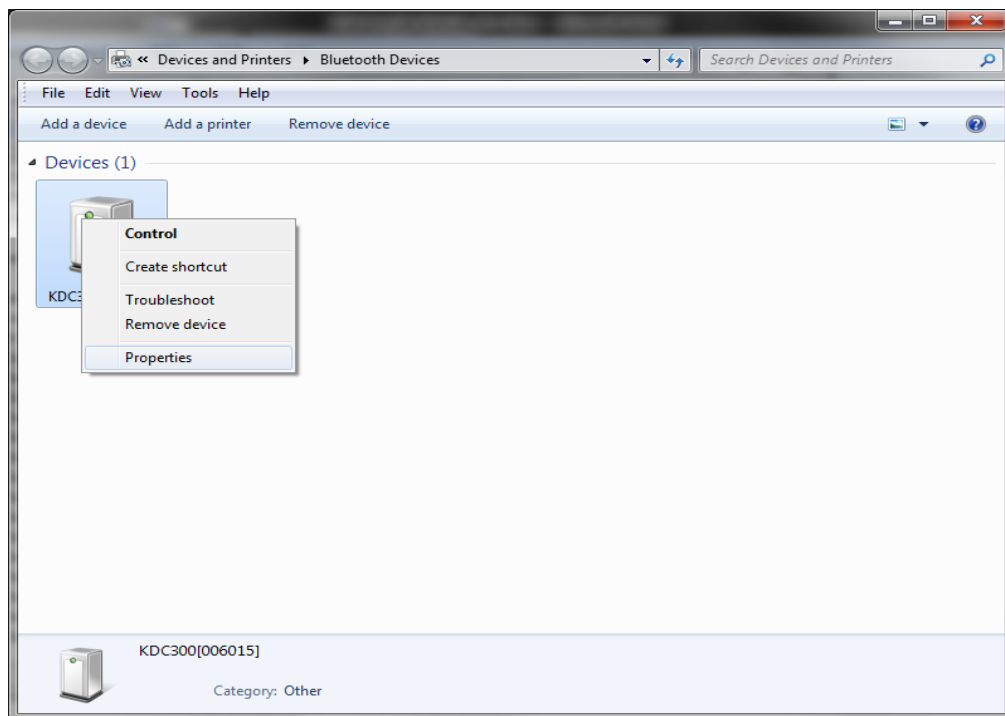
1. Go to Bluetooth device list via "Show Bluetooth Devices".



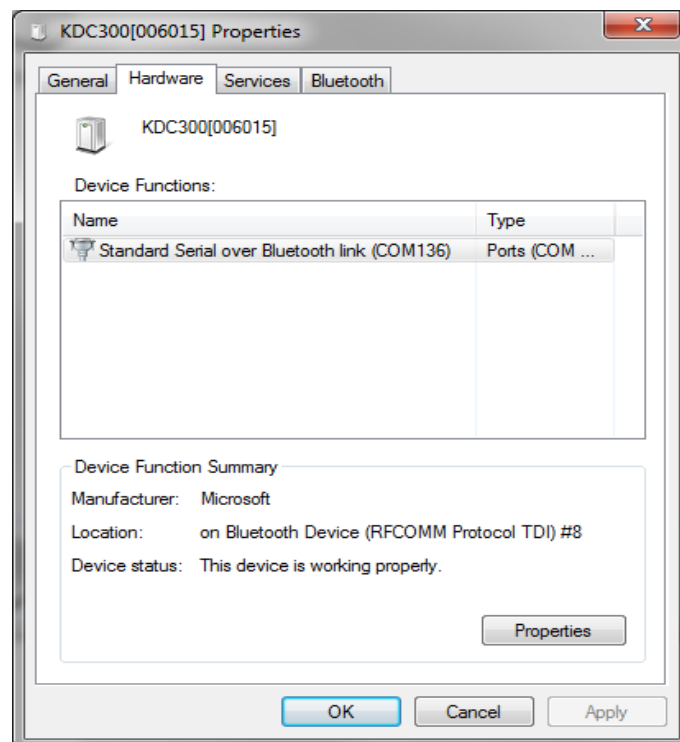
2. Select Bluetooth device that is paired to find serial comport #.



3. Right-click and select "Properties".



4. Select **Hardware** tab. You can find Bluetooth device serial comport #.



5. Using KDC with Bluesoleil through KBD401G

KBD401G version supports various functions through Bluesoleil software such as transferring file to and from your mobile phone, printing a file using a Bluetooth printer (within range) without any cable connection, and using a Bluetooth wireless keyboard and mouse device with your computer and so on. You can also use KDC in Bluesoleil program. Follow the steps to install Bluesoleil and experience using KDC with Bluesoleil.

5.1 Installing BlueSoleil

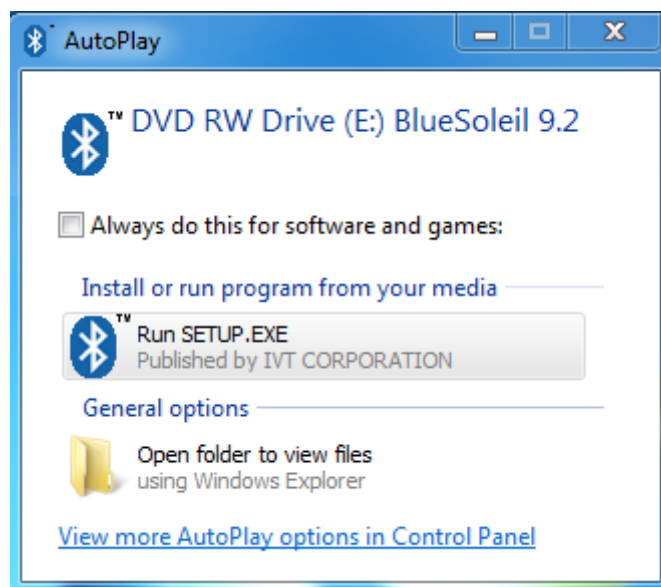
Before installing

Uninstall the earlier version of BlueSoleil you installed on your computer: Click **Start** -> **Control Panel** to open Control Panel, and then choose **Uninstall a program**. Select BlueSoleil in the program list and uninstall it.

Note: Bluetooth adapter can be remained plugged or unplugged when installation.

Installing BlueSoleil

1. Insert BlueSoleil installation CD into the CD-ROM.
2. Select **Run SETUP.EXE** to start installation.



3. Choose the setup language.



4. Follow the instructions on the screen.



5. Restart your computer.




Note: If you do not restart, some operations may be abnormal.

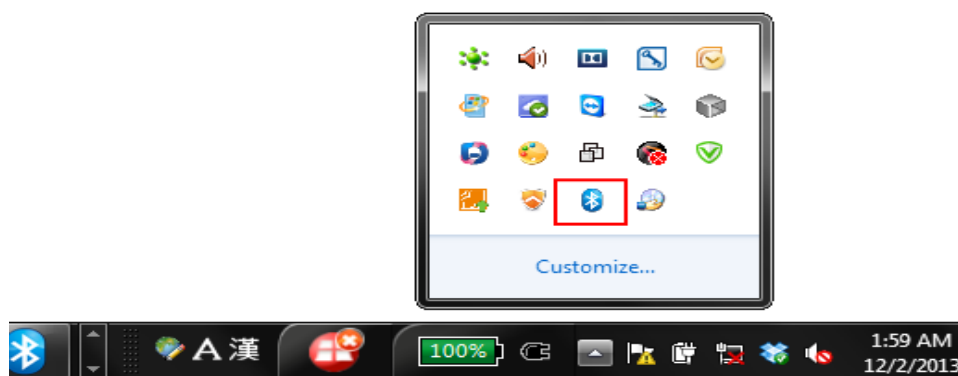
5.2 Uninstalling BlueSoleil

BlueSoleil can only be removed from Control Panel. For detailed instructions, please refer to "step 2.1 Before installing" in this guide.

5.3 Getting Started

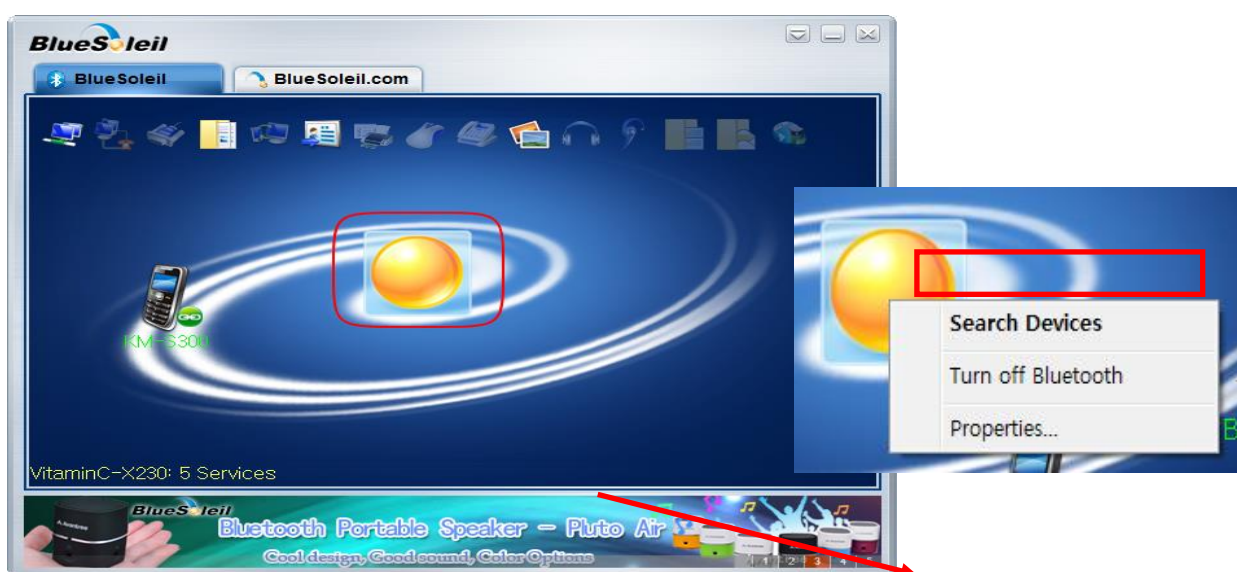
1. Starting BlueSoleil

Double click "**Bluetooth Places**" icon on the desktop  or right-click the Bluetooth icon in the system tray and select "**Explore Bluetooth Places**".



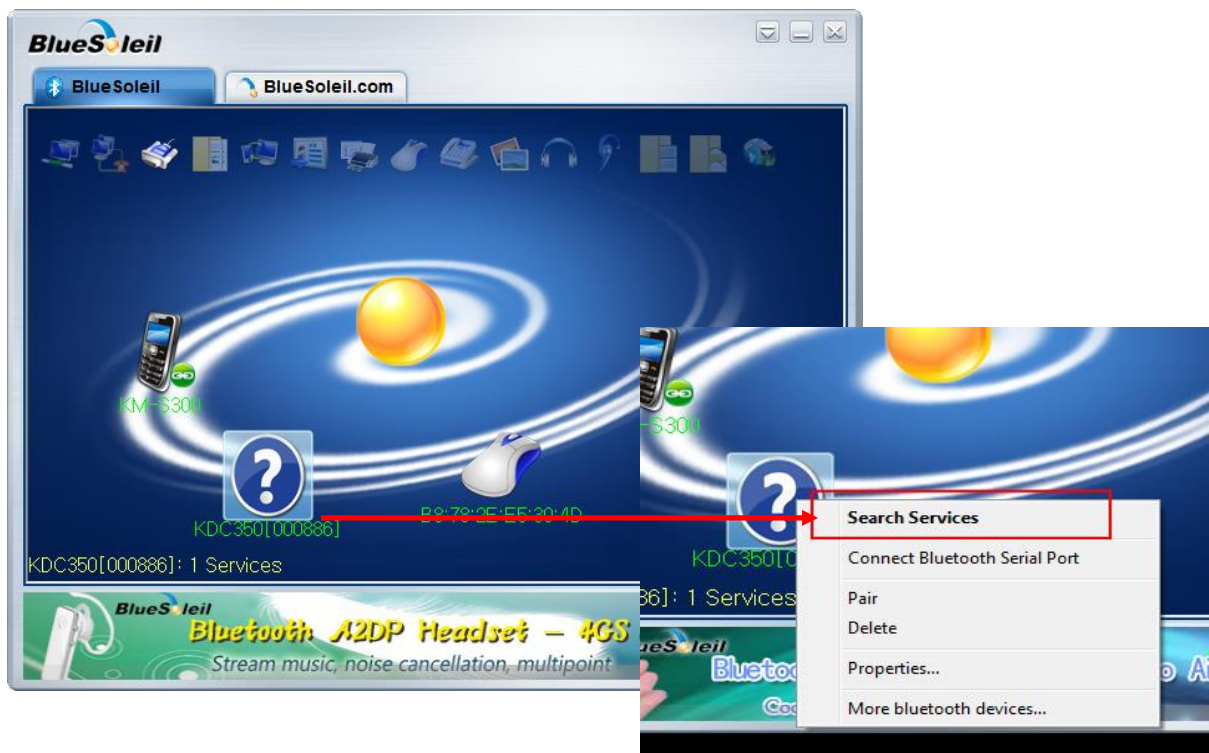
2. Search remote Bluetooth Devices

Make the devices discoverable first. Double-click **Search Devices** icon and then Bluetooth devices will appear in the window.



3. Search Services

Double-click the device icon to enter the device's subfolder. Services supported by the device will appear in the window automatically. If not, double-click **Search Services** icon to refresh.

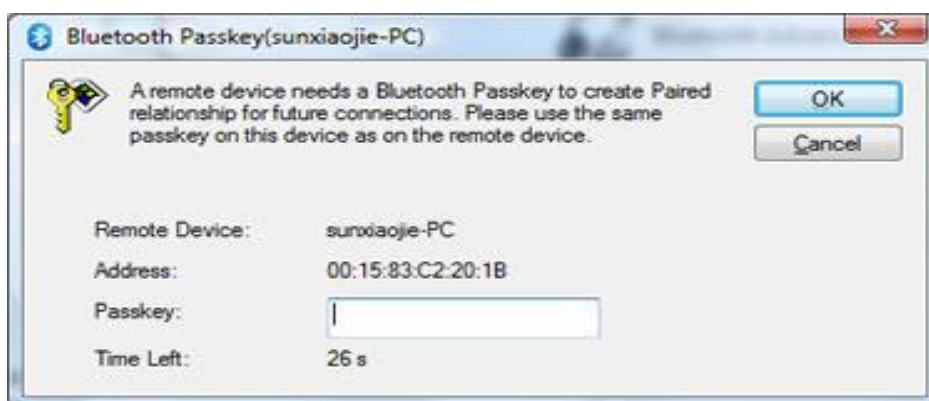


4. Establish a connection

Double-click a service icon to initiate a connection.



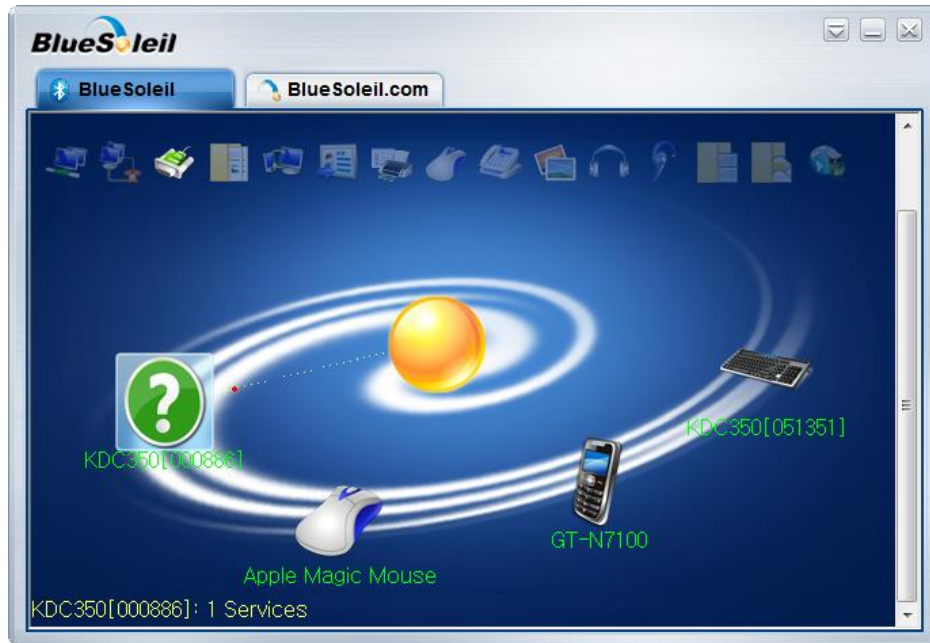
You might be prompted to enter a passkey to authenticate. Enter the same passkey on both sides, or enter the specific one provided by the device manufacture on your computer side only. On BlueSoleil side, the dialog box as shown in the following picture will pop up for you to enter a passkey.



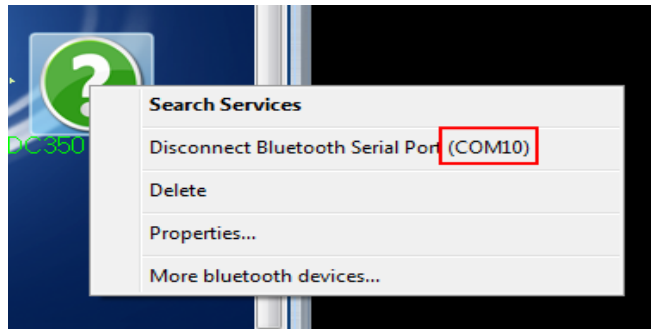
5. Right-click an available KDC and select **Pair**.



6. When you use SPP, pair the KDC by selecting
Connect Bluetooth Serial Port (COM151)

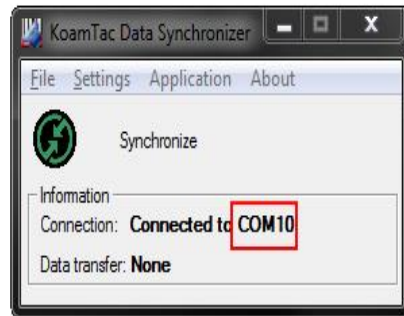


When you select and right-click on the available KDC, you can check Serial Port Number.





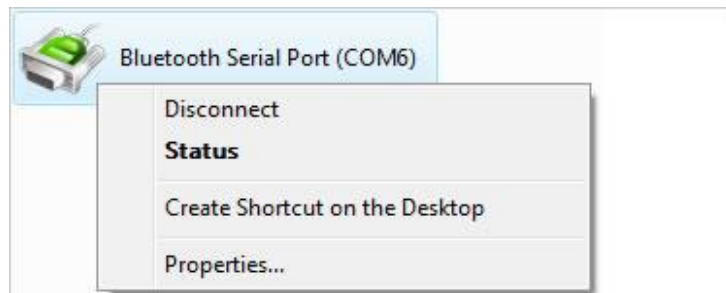
7. Run KTSync by double-clicking  icon in your computer desktop. When KTSync runs, the KDC communicates with KTSync through the serial port.



8. When you use HID, pair the KDC by selecting **Connect Bluetooth Human Interface Device**.

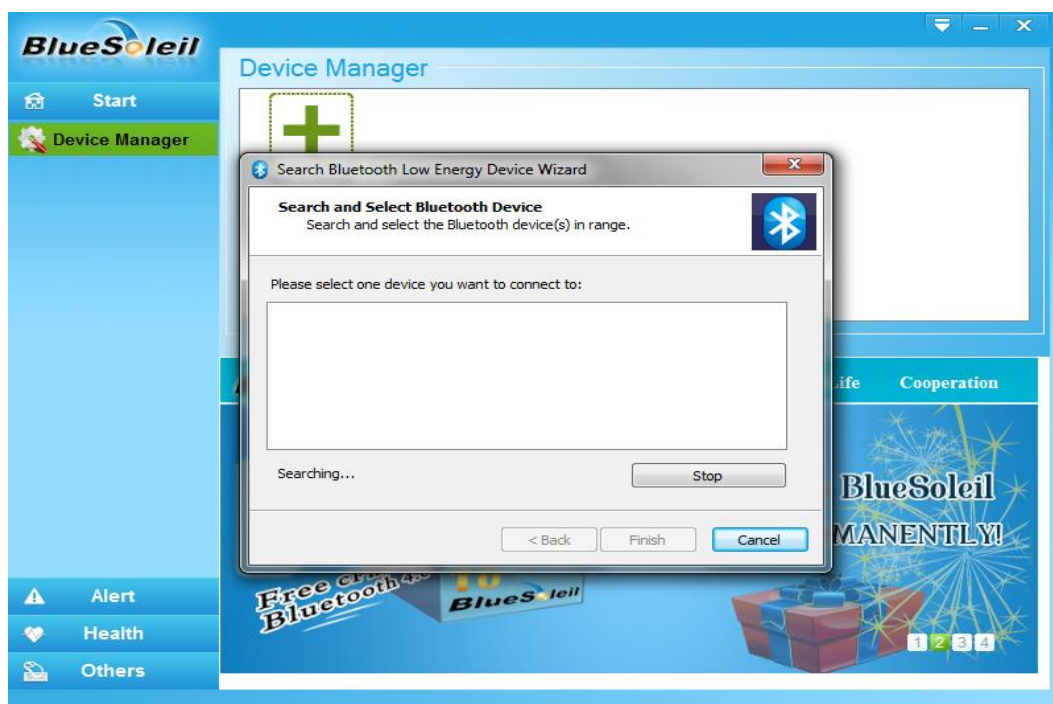
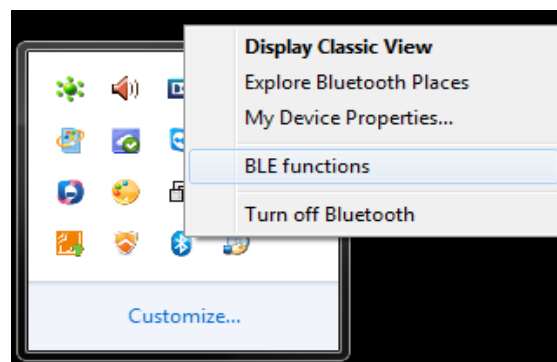
9. Terminate a connection

Right-click the connecting remote service icon, and select Disconnect.



10. Both KDB401 and Bluesoleil 9.x support BLE (Bluetooth Low Energy). You can use BLE supporting devices by following the processes as below.

Click Bluetooth icon in the tray and select BLE functions.



11. Click , and you will find other settings and information.



6. Warranty

LIMITED WARRANTY AND DISCLAIMERS

BY OPENING THE PACKAGE OF THIS PRODUCT YOU AGREE TO BECOME BOUND BY THE LIABILITY AND WARRANTY CONDITIONS AS DESCRIBED BELOW.

UNDER ALL CIRCUMSTANCES THIS MANUAL SHOULD BE READ ATTENTIVELY, BEFORE INSTALLING AND OR USING THE PRODUCT.

Warranty/Warranty Period/Liability

KoamTac, Inc. ("KoamTac") manufactures its hardware products in accordance with industry-standard practices. Unless otherwise agreed in a contract, KBD401 is warranted for a period of one year after purchase, covering defects in material and workmanship. KoamTac will repair or, at its discretion, replace products that prove to be defective in material or workmanship under proper use during the warranty period. KoamTac will not be liable in cases (i) in which the unit has been repaired or altered unless done or approved by KoamTac, (ii) in which the unit has not been maintained in accordance with any operating or handling instructions supplied by KoamTac, (iii) in which the unit has been subjected to unusual physical or electrical stress, misuse, abuse, power shortage, negligence or accident or (iv) in which the unit has been used other than in accordance with the product operating and handling instructions. Preventive maintenance is the responsibility of the customer and is not covered under this warranty. Under no circumstance will KoamTac be liable for any direct, indirect, consequential or incidental damages arising out of use or inability to use either the hardware or software, even if KoamTac has been informed about the possibility of such damages.

Warranty Coverage and Procedure

During the warranty period, KoamTac will repair or replace defective products returned to KoamTac warehouse. International customers should contact the local KoamTac office or support center. If warranty service is required, KoamTac will issue a Return Material Authorization Number. Products must be shipped in the original or comparable package, shipping and insurance charges prepaid. KoamTac will ship the repaired or replacement product freight and insurance prepaid. Customer accepts full responsibility for its software and data including the appropriate backup thereof. Repair or replacement of a product during warranty will not extend the original warranty term.

CAUTION: Changes or modifications not expressly approved by the manufacturer responsible for compliance could void the user's authority to operate the equipment.

7. Contact Information



CORPORATE HEADQUARTERS
116 Village Blvd., Suite 305
Princeton, NJ 08540, USA
Phone: 609-256-4700, FAX: 609-228-4373
Email: support@koamtac.com

For more information, visit our website - www.koamtac.com